

Reports

The reports section provides a very useful reports which can be used by the customer to help him do a better maintenance and planning for the equipments. Currently five reports are available and more reports will be added in the future. These reports are:

1. Monitoring review for a period
2. Condition monitoring report graphical
3. Condition monitoring report textual
4. List of equipment setup in CENT with sample points
5. List of scheduled equipment and their schedule details

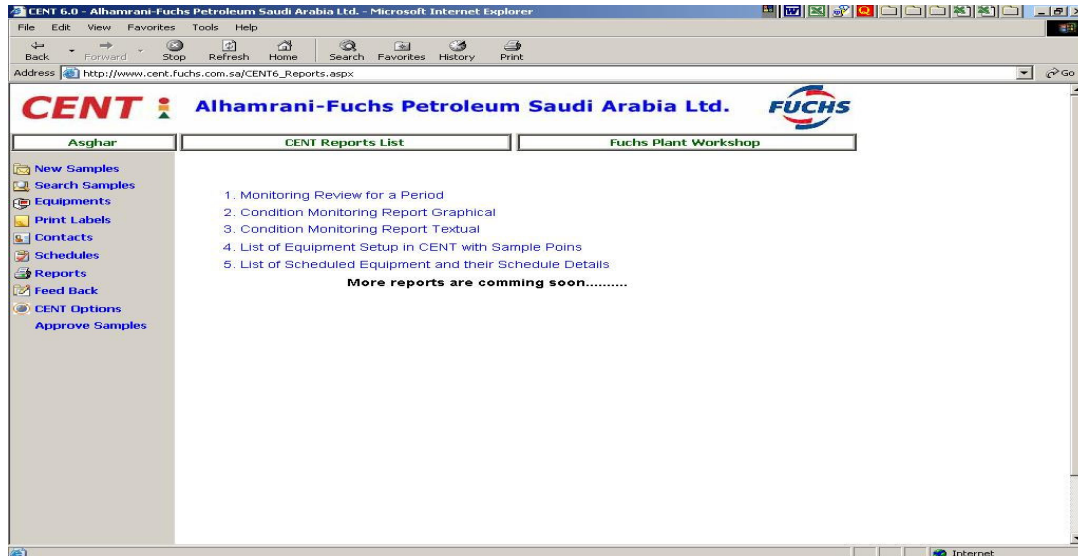


Fig. 14

1 Monitoring Review for a period

This is a very comprehensive report which gives a complete history of all samples done within a specific period categorized and sorted by equipments/sample points in one report. Based on this report, the customer can make better decisions in increasing the sampling intervals or reducing them for a specific sample point/equipment. To generate the report the user has to feed the starting and ending dates for which the report is required as shown in the following screen.

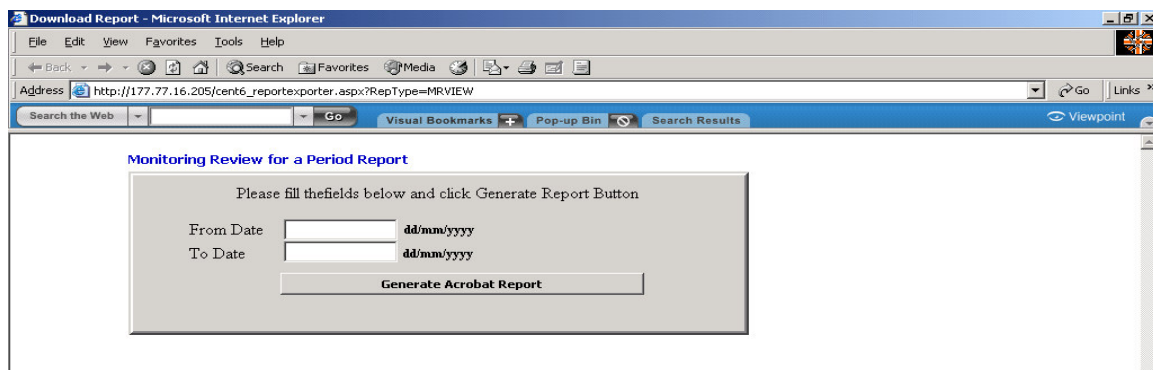


Fig. 15

The report sample is shown below (Fig. 16)

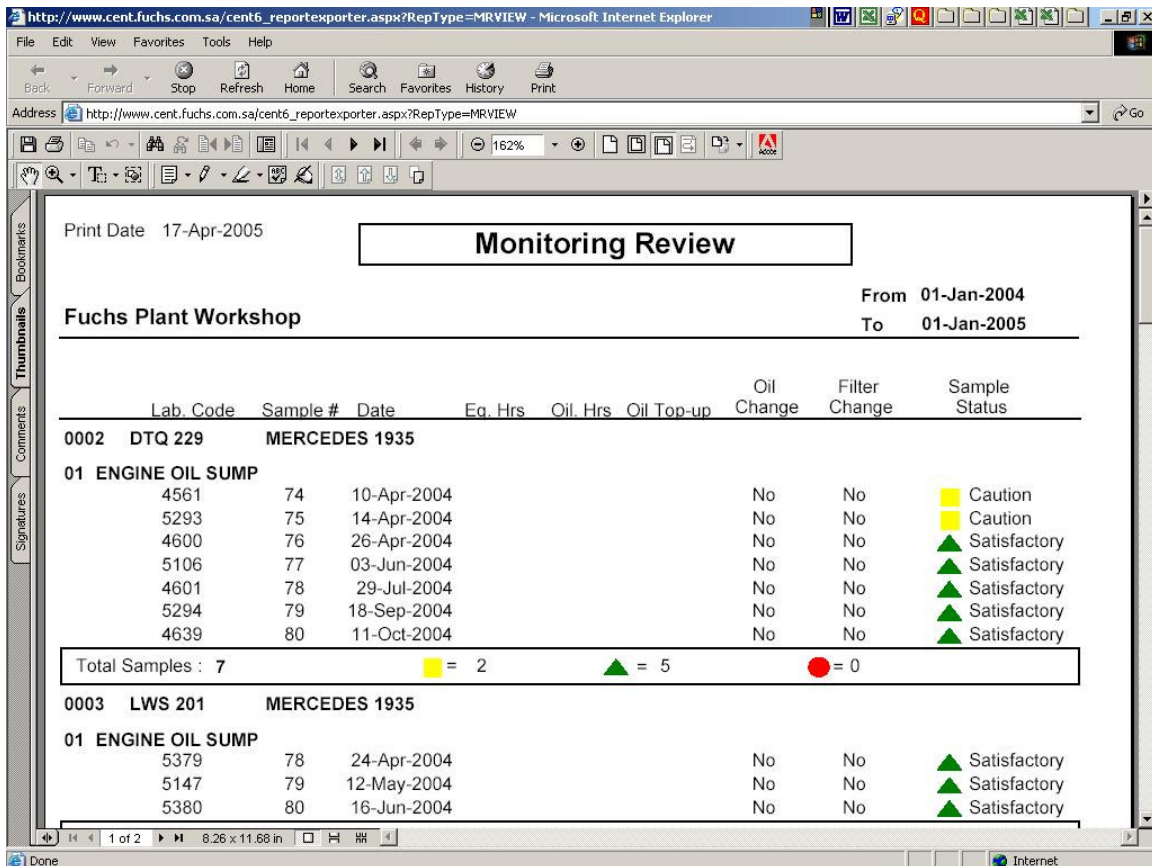


Fig. 16

2 Condition Monitoring Graphical Report

This is another useful report which displays for a specific sample the results in graphical format as shown below (fig. 17). The same report can be generated from the sample details screen (fig. 4).

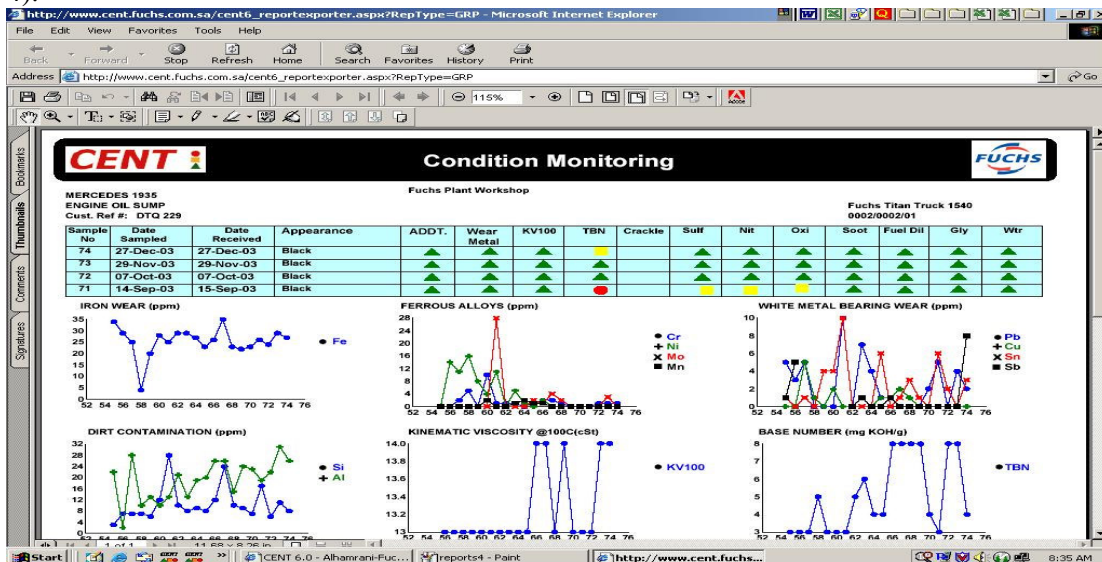


Fig. 17

3 Condition Monitoring Textual Report

This is the same report but in a text format as shown below (fig. 18). The same report can be generated from the sample details screen (fig. 4).

ALHAMRANI FUCHS PETROLEUM SAUDI ARABIA

CENT
Condition Monitoring
Yanbu Blending & Grease Plant
P.O.Box 30439,
Yanbu Al Sinaiyah,
Saudi Arabia.
Telephone : + 966 4 396 2487
Fax : + 966 4 396 3783
http://www.cent.fuchs.com.sa

Contact Name : Mr. Muhammad Zulhash Miah
Job Title: Section Head Workshop
Customer: Fuchs Plant Workshop
Tel: 3962487 / 163
Fax: 3963783
Address:

Unit: Customer Ref: DTQ 229
Equipment: MERCEDES 1935 CENT Ref: 0002/0002/01
Compartment: ENGINE OIL SUMP Lubricant : Fuchs Titan Truck 1540
Sample Point: ENGINE OIL SUMP Equipment Location:

Sample No.	Date Sampled	Date Received	Oil Hrs/Kms	Equip. Hrs/Kms	Oil-Topup	Oil Changed	Filter Changed	Label Code	Lab. Code	Appearance
71	14-Sep-03	15-Sep-03				No	No		5259	Black
72	07-Oct-03	07-Oct-03				No	No		4560	Black
73	29-Nov-03	29-Nov-03				No	No		4952	Black
74	27-Dec-03	27-Dec-03				No	No		4561	Black

Fig. 18

4 List of equipment setup in CENT with sample points (fig. 19). Same report can be generated from Equipments option (fig. 7)

Equipment and Sample Points

CENT
Print Date : 17-April-2005

Fuchs Plant Workshop

Sample Point	Lubricant
0002 DTQ 229	MERCEDES 1935
Type Tractor	
Manufacturer Mercedes Benz	
Model MB 1935	
0002/0002/01 ENGINE OIL SUMP	Fuchs Titan Truck 1540
0003 LWS 201	MERCEDES 1935
Type Tractor	
Manufacturer Mercedes Benz	
Model MB 1935	
0002/0003/01 ENGINE OIL SUMP	Fuchs Titan Truck 1540
0005 ACL 918	MERCEDEZ 1924
Type Truck	
Manufacturer Mercedes Benz	
Model MB 1924	
0002/0005/01 ENGINE SUMP	Fuchs Titan Truck 1540
0008 PW ASL 437	MERCEDEZ 1935
Type Tractor	
Manufacturer Mercedes Benz	
Model MB 1935	

Fig. 19

5. List of scheduled equipment and their schedule details (fig. 20). Same report can be generated from the schedule option (fig. 13).

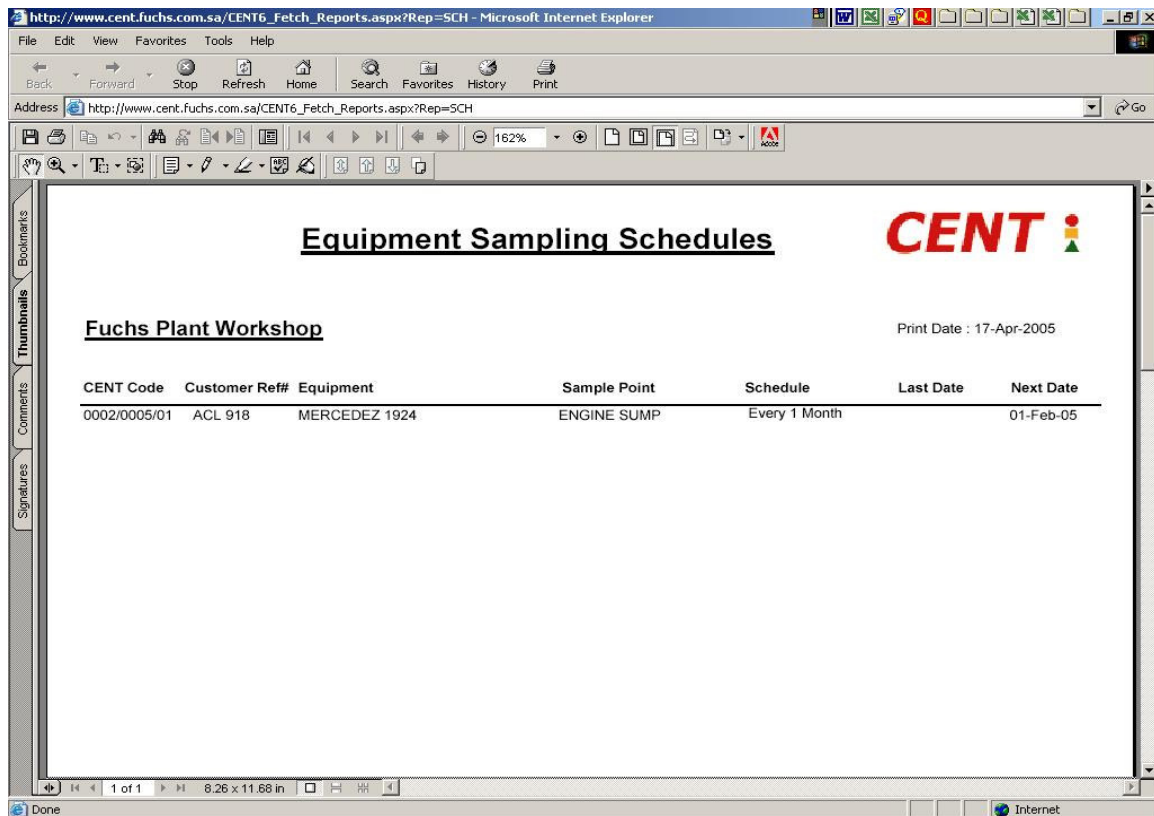


Fig. 20